

Behold Him

(based on the recording by Paul Baloche)

Words and Music by
Paul Baloche and Mitch Wong

♩ = 53

VERSE 1

A

A/D



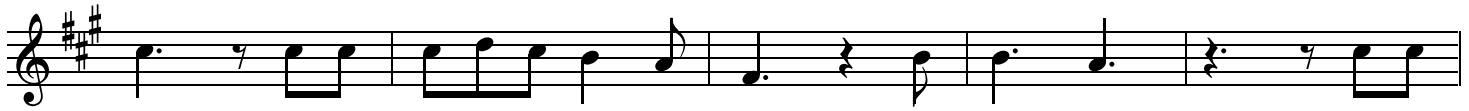
1. He who was be - fore there was light, walked a - cross the pag - es of

5

A/E

D

A



time. He who made ev - 'ry liv - ing thing, be - hold Him. He who

10

A/D

A/E



heard hu - man - i - ty's cry, left His throne to wake as a child. He be -

CHORUS 1

14

D

A



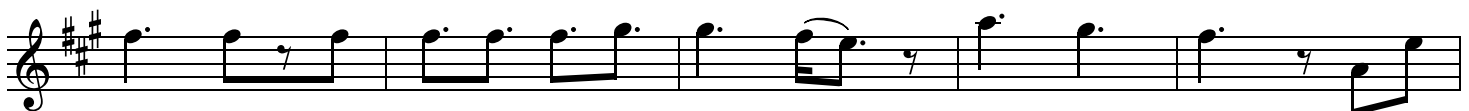
-came like the least of us. Be - hold Him. Je - sus, Son of God, Mes -

19

D²

E⁽⁴⁾

D²



-si - ah, the Lamb, the roar - ing Li - on. _ Oh, be still and be -

TURNAROUND

VERSE 2

24

A

A/D

A



-hold Him.

2. He who

30

A/D

E^{sus}

dined with sin - ners and saints, healed the blind, the lost and the lame, e - ven

34

D²

A/E

now He is in our midst. Be - hold Him. He who chose a cri - mi - nal's

39

D²/F[#]A/C[#]D²

end, paid with blood to set - tle our debt, bur - ied death as He rose to life, be -

§ CHORUS 2

44

A

D²

-hold Him. Je - sus, Son of God, Mes - si - ah, the Lamb, the roar - ing
Je - sus, Al - pha and O - me - ga, our God the ris - en

4th time to Coda ⊕

INSTRUMENTAL

49

E⁽⁴⁾D²E⁽⁴⁾

Li - on. _ Oh, be still and be - hold Him.
Sav - ior. _ Oh, be still and be - hold Him.

BRIDGE

55

D²

A

E⁽⁴⁾D²

A

Ho - ly, ho - ly, ho - ly _ is the Lord God Al - might - y.

61

E⁽⁴⁾D²

1.
A
(repeat as desired)

2.
A
D.S. al Coda

Wor - thy, wor - thy, wor - thy _ to re - ceive all praise. praise.

ENDING

66

⊕ Coda

A

D²

A musical staff in treble clef with a key signature of one sharp (F#). The staff contains five measures. The first measure has a half note G4 with a fermata. The second measure has a half note A4 with a fermata. The third and fourth measures contain diagonal slashes. The fifth measure has a half note B4 with a fermata.

- hold

Him.

Be -

70

A/E

D²

A musical staff in treble clef with a key signature of one sharp (F#). The staff contains five measures. The first measure has a half note G4 with a fermata. The second measure has a half note A4 with a fermata. The third and fourth measures contain diagonal slashes. The fifth measure has a half note B4 with a fermata.

-hold

Him.